

Community Use Plan
Earl Haig Memorial Hall
September 2019

Introduction

- 1.0 This Community Use Plan has been produced to satisfy Condition 5 of planning application HGY/2019/1026. This application approved the conversion of the Earl Haig Memorial Hall from Sui Generis to a children's nursery (Use Class D1), plus other associated works.
- 1.1 Planning permission was approved on the 09th August 2019 by Haringey Council (The Council).

Condition 5 is as follows:

Prior to the commencement of the use hereby permitted a Community Use Plan shall be submitted to and approved in writing by the Local Planning Authority. The Plan shall include details of pricing policy, hours of use, access by non-nursery/non-members, management responsibilities and include a mechanism for review. The approved plan shall be implemented on commencement of use hereby approved.

Reason: To secure well managed safe community access to the community facility.

- 1.2 The Council from the wording of the condition evidently require the following to be addressed:
 - pricing policy,
 - hours of use,
 - access by non-nursery/non-members,
 - management responsibilities and a mechanism for review.

Hence, the above has been detailed within the remainder of this plan.

Community Use Plan

- 2.0 This plan outlines how the operator will ensure space can be utilised by community groups. The space will be usable by most community groups, however, control of who takes up use of the space is needed for the protection of the children. Hence, a representative of Kido Schools United Kingdom Limited will have complete discretion to refuse use.

Access by Community Groups

- 2.1 The space that could be used is evident on the plan in Appendix 1. Entrance to the space will be from the principal elevation facing Elder Avenue via the reception, users will be provided with a secure means of entry that only works for that entrance.
- 2.2 Users will be required to maintain the space during and after use, and ensure all paraphernalia is taken away after each use. There will be no available storage space. Groups will be required to pay a cleaning fee after use.
- 2.3 The toilet and hygiene facilities will be available, however, there will be no access to the kitchen in case of allergens.
- 2.4 The use of the space will be advertised upon the website for the nursery; contact details for a representative of Kido, a telephone or email address will be provided on the website. The individual users will be able to advertise upon their own websites/social media accounts, with agreement from Kido.

Pricing

- 2.5 The price will be negotiable upon inquiry and will depend on individual requirements. Pricing will be on an hourly basis.

Hours of Opening

- 2.6 The use of the space will be made available between the hours of;
- 7:30 pm to 9:30 pm – Monday to Friday
 - 10am – 4pm - Saturdays
 - 10am - 1pm - Sundays

Monitoring and Review

- 2.7 Records will be kept by the officer manager in a spreadsheet or other such program of users. The uptake of the space will be monitored annually.

Appendix 1

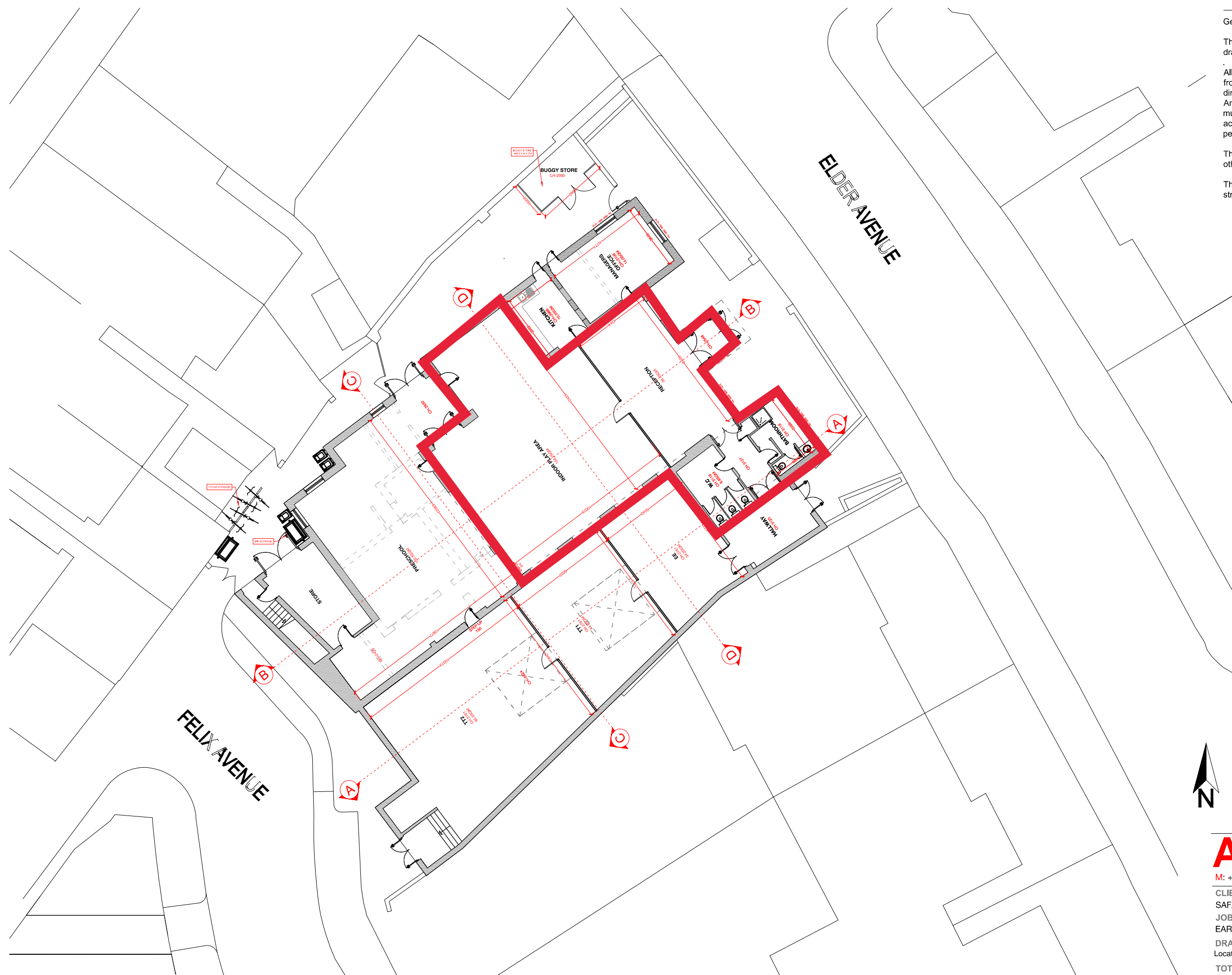
General note

This drawing is to be read in conjunction with all other relevant drawings, schedules and specifications issued by AYH DESIGNS

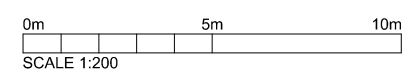
All interior dimensions including ceiling heights are taken to and from finished surfaces unless otherwise stated. All levels and dimensions must be checked on site. Any discrepancies with the information depicted in this drawing must be reported to AYH DESIGNS. Responsibility can not be accepted for alterations made to this drawing without prior permission from AYH DESIGNS

This drawing must not be photocopied, scaled or reproduced otherwise scale accuracy can not be guaranteed.

This drawing should not be used in any circumstances for any structural calculation or building construction / demolition work.



1 Proposed Site Plan
Scale: 1:200



AYHDESIGNS

M: +44 (0)7595464885 M: ayhconceptdesigns@gmail.com

CLIENT:
SAFARI KID
JOB TITLE:
EARLS HAIG MEMORIAL 18 ELDER AVENUE, LONDON N8 9TH
DRAWING TITLE:
Location of community space within the Earl Haig Memorial Hall
TOTAL SQM/SQFT:
206.0 SQM / 2217 SQFT

JOB NO:	DRAWING NO:	REVISION:	SCALE(S): 1:200@A3
DRAWN: AYH	CHECKED: YES	PLANNING	DATE: